



THE Ultimate Weight-Loss Adventure

Steve Hanson
Scott Lee
Prince Woodrow
Fernando Salazar

Contents

- Introduction
- Alternatives
- System Description
- Project Management
- Design Validation
- Team Management
- Social, Ethical, Political, Economic Concerns

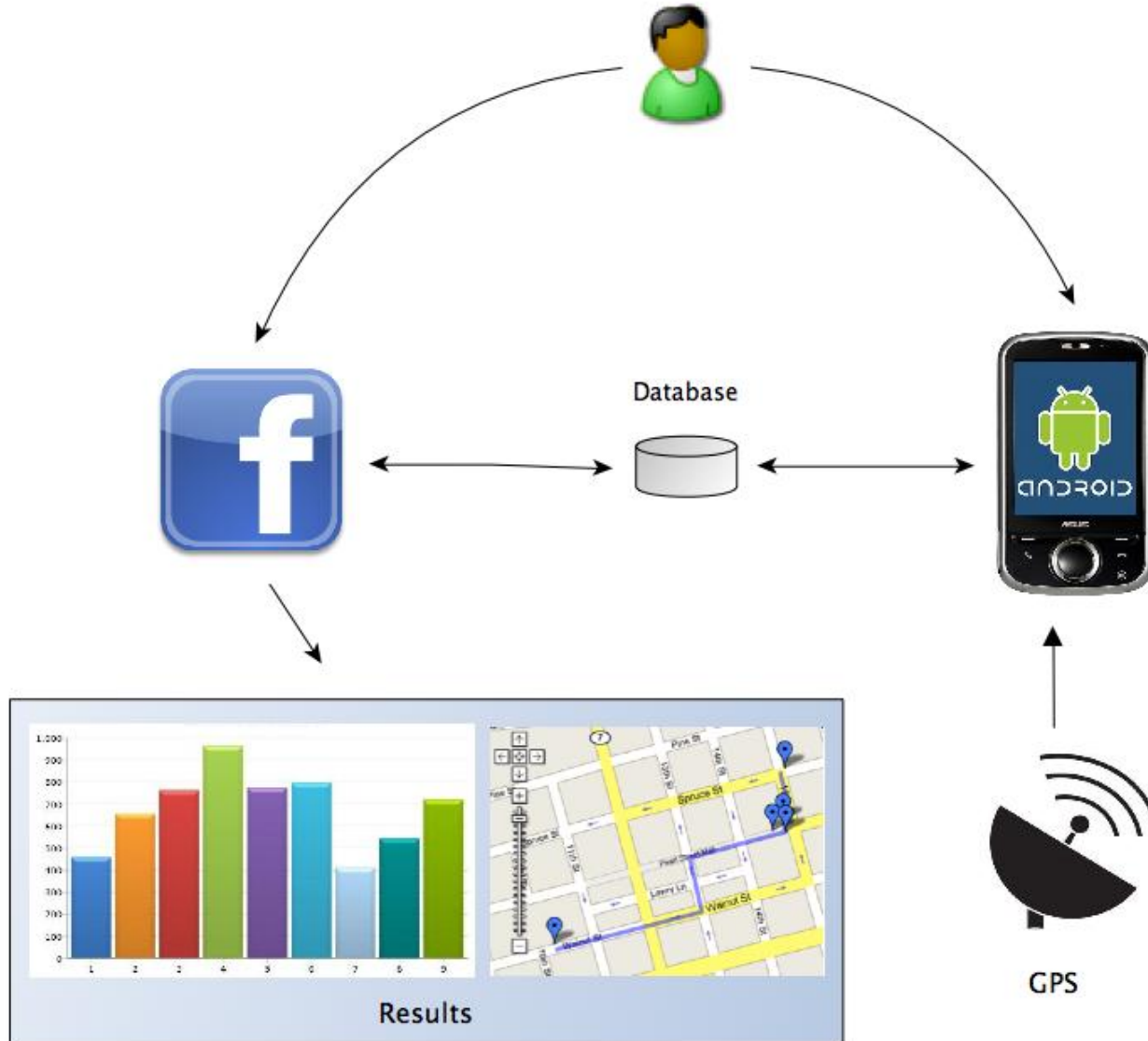
Introduction

- Background
 - Obesity is rising and people lack motivation to work out and be active
- Need
 - Promote fun, active workout so users can be healthy
- Goal
 - create a mobile, collaborative social game that will encourage active lifestyle
- Objectives
 - Fun game, collaborative, users have fun being active, easy to use

Design Alternatives and Final Decision

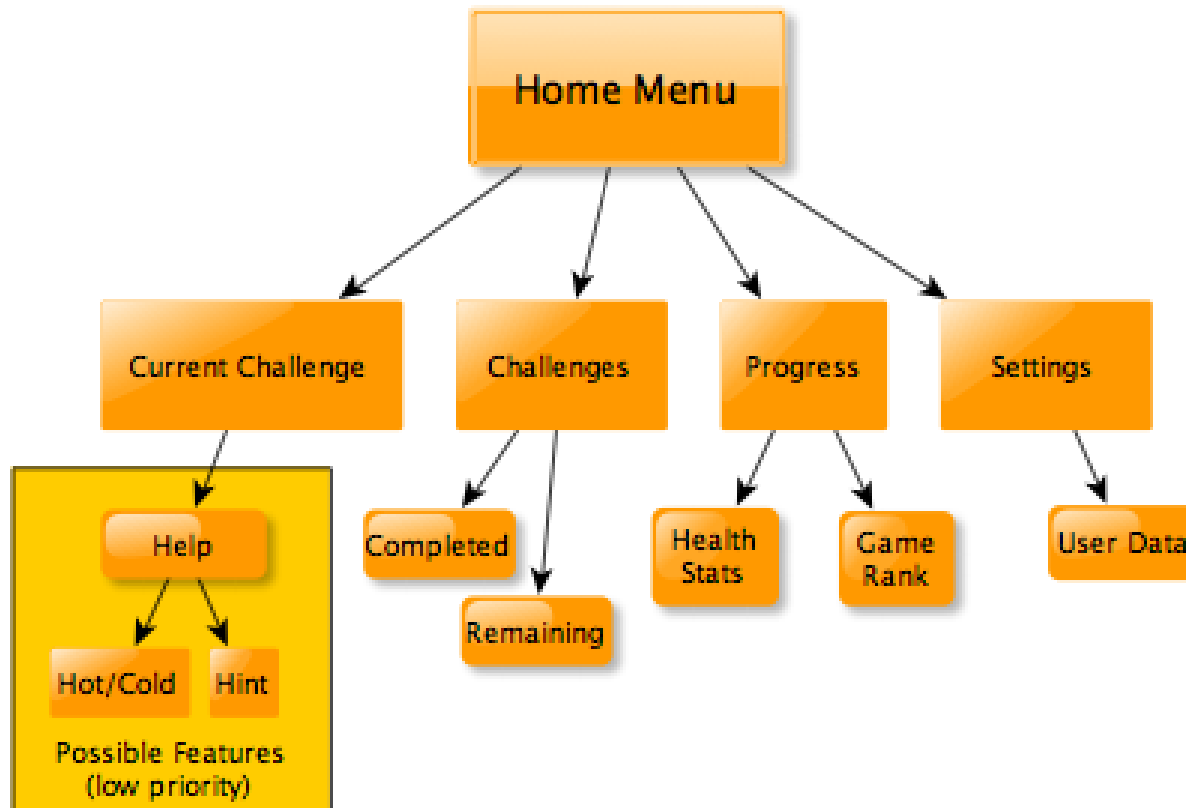
- Alternatives
 - Use accelerometer to track steps
 - Amazing Race
 - Running race game
 - Various workouts tracking
- Final Decision
 - Originally proposed design
 - Campus scavenger hunt with health charting

System Description



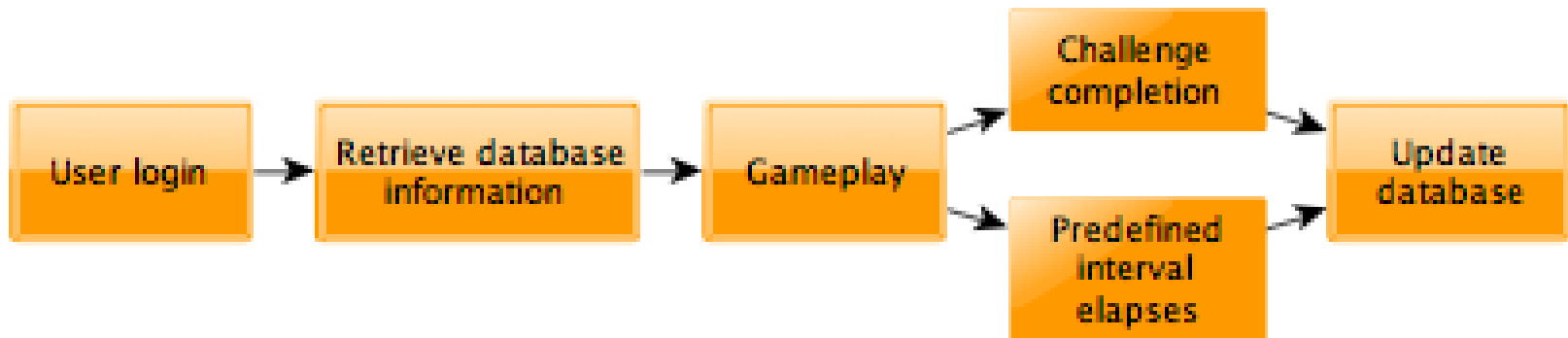
System Description

- Android Interface



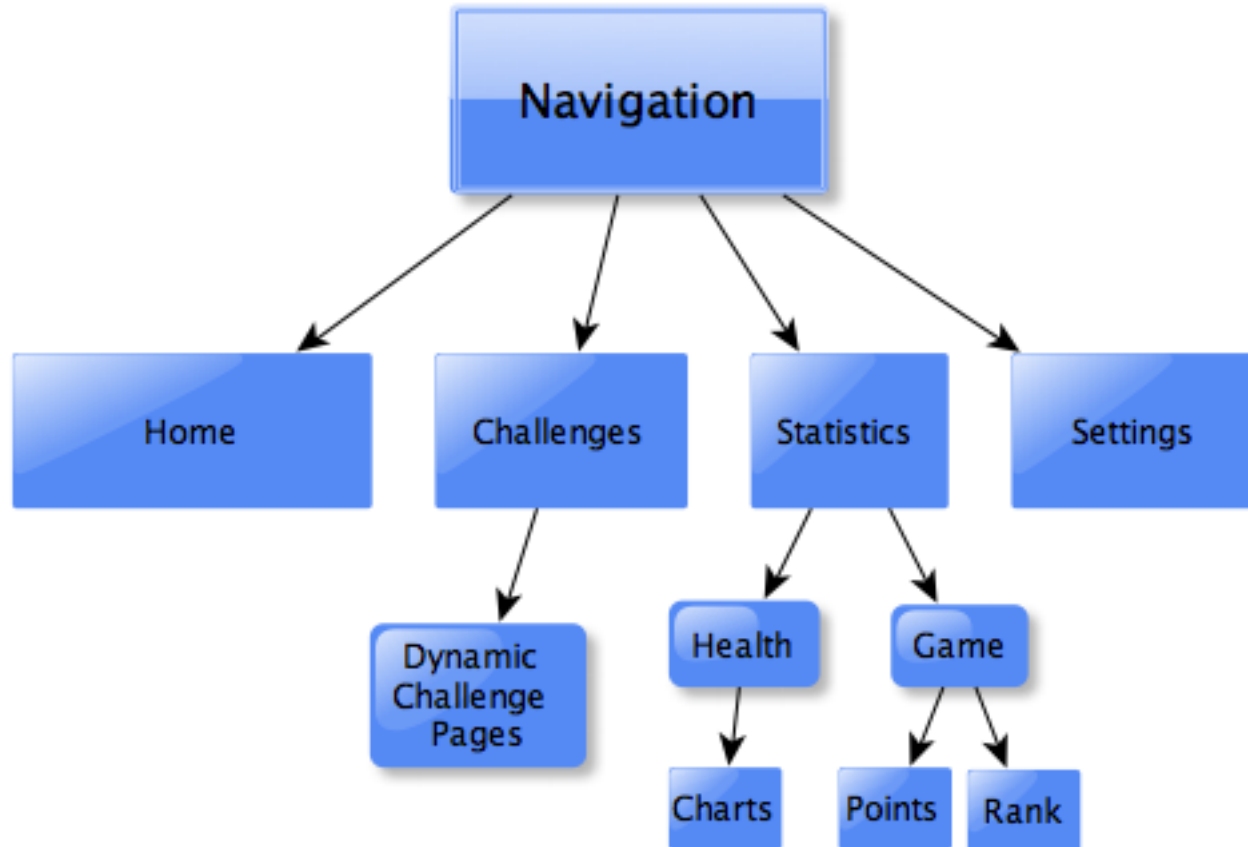
System Description

- Android Data Handling



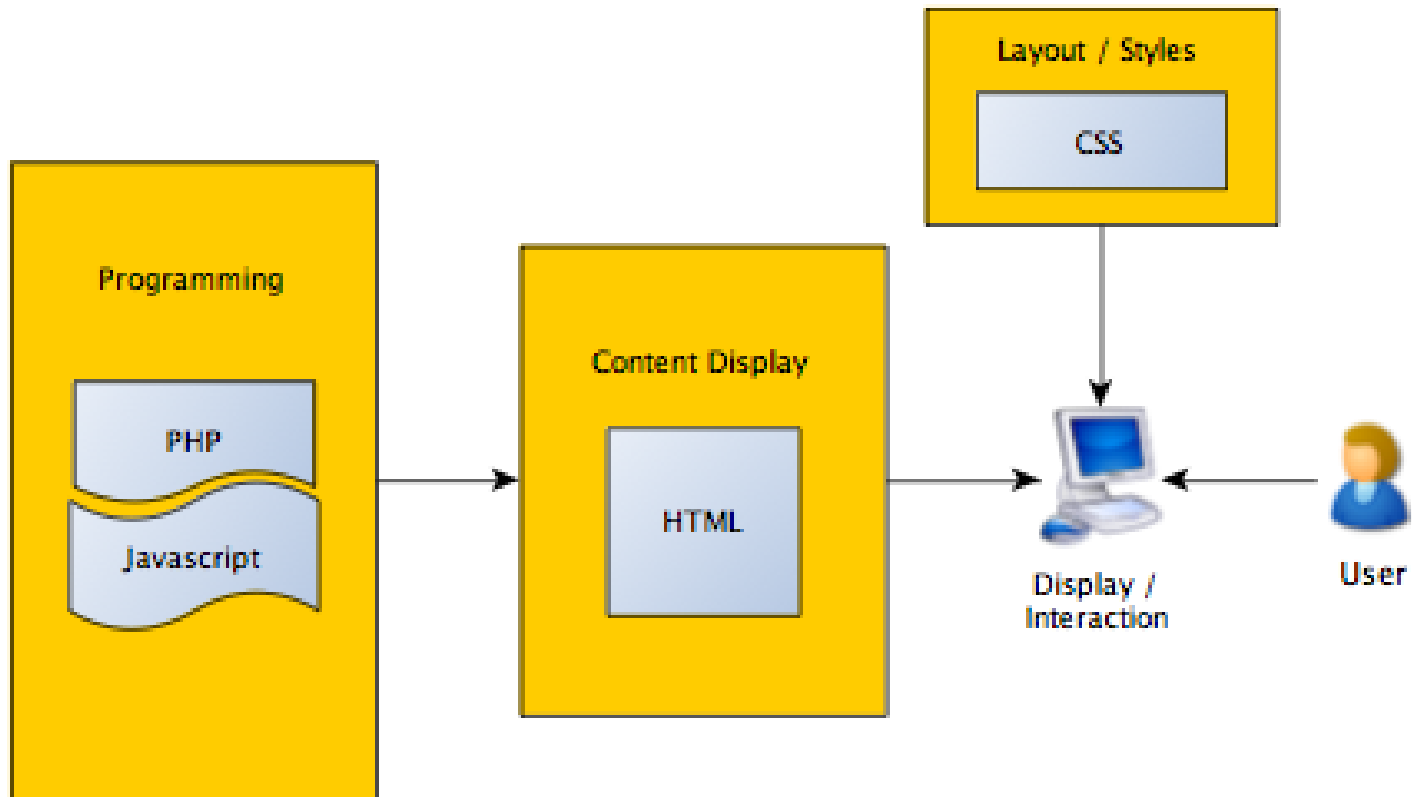
System Description

- Facebook Application



System Description

- Web language interplay



System Description

- MySQL Tables

Users		Challenges	
Attributes	Data Types	Attributes	Data Types
id	long	id	long
name	varchar	level	integer
android	boolean	description	varchar
level	integer (1,2,3)	image URL	varchar
challenges completed	list	latitude	double
current challenge	integer	longitude	double
calorie goal	integer		
calories burned	integer		
weight	integer		
height	integer		
distance travelled	integer		
following (list of ids)	list		

Task Schedule (Gantt)

ID	Task Name	Start	Finish	Duration	% Complete	Feb 2011			Mar 2011				Apr 2011				
						2/6	2/13	2/20	2/27	3/6	3/13	3/20	3/27	4/3	4/10	4/17	
1	Android SDK Installation, Testing	2/9/2011	2/21/2011	9d	100%												
2	SQL database setup	2/15/2011	2/23/2011	7d	100%												
3	Android Interface Design	2/21/2011	3/10/2011	14d	90%												
4	Android DB interaction	2/24/2011	3/14/2011	13d	75%												
5	Android challenge viewing	3/11/2011	3/25/2011	11d	0%												
6	Android interface completion	3/10/2011	3/29/2011	14d	90%												
7	GPS Support For Android	3/2/2011	3/24/2011	17d	75%												
8	GPS Properly Confirms Challenge Completion	3/15/2011	3/25/2011	9d	0%												
9	Facebook interface design	2/9/2011	2/28/2011	14d	90%												
10	Basic Facebook app launched	2/24/2011	2/25/2011	2d	100%												
11	Facebook app uses SQL, accesses users	2/28/2011	3/4/2011	5d	100%												
12	Facebook app collaboration features	2/22/2011	3/4/2011	9d	100%												
13	Facebook Friend Following Feature	3/4/2011	3/25/2011	16d	75%												
14	Facebook health statistics	3/28/2011	4/8/2011	10d	0%												
15	Finalized Facebook app	3/30/2011	4/14/2011	12d	70%												
16	9 Challenges created	2/25/2011	4/15/2011	36d	30%												
17	Testing/Debugging	4/5/2011	4/25/2011	15d	0%												

Design Validation

- GPS Test
 - accurate location - test against car GPS
 - determine margin of error
- Intuitiveness Test
 - ease of use of Android, Facebook applications
 - survey
- Sanity Test
 - ensure users are exercising and not using prohibited modes of transportation
- Health Statistics Test
 - show that users are achieving health goals
 - survey

Team Management

Facebook

- Steve
 - Complete friend-following feature (3/25)
 - Determine final database schema for storing workout info (3/30)
 - Home page finalized with all desired content and styling (4/10)
 - Robust user management and querying. Database cleanup features (4/10)
 - Hotter/Colder and Hints features (extra feature, if time) (4/20)
 - Overseeing teamwork and interaction between the two modules
- Fernando
 - finalize graph and chart formats for displaying health statistics (3/30)
 - Basic charting or graphing of health statistics (4/10)
 - Completion of 5 challenges (4/2)
 - Final completion of challenges (4/15)

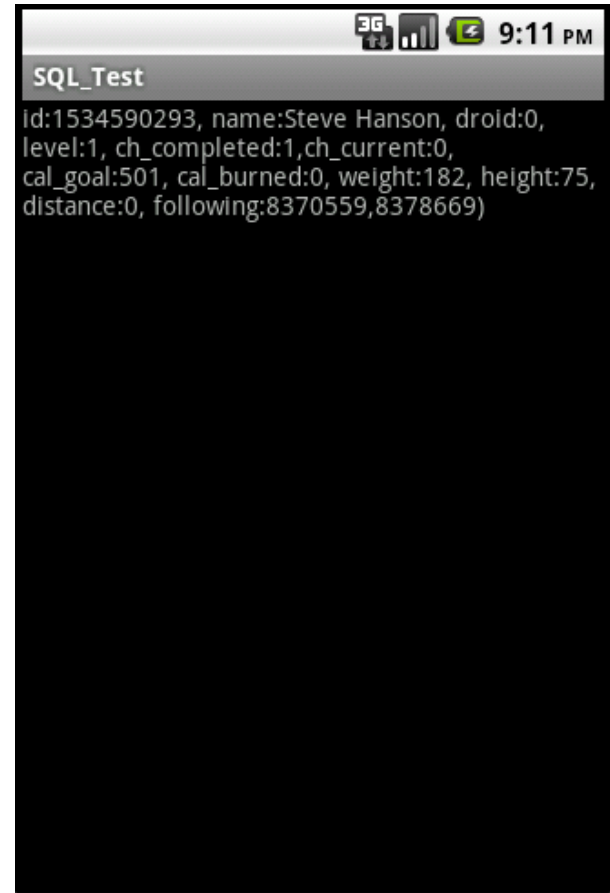
Team Management

Android

- Scott
 - Complete minimal UI features and robustness (3/30)
 - Generate challenge selection screen (3/25)
 - Challenge confirmation using GPS (3/30)
 - Complete challenge selection page. Robust (4/15)
 - Make simple health statistics page – may just point to Facebook (4/20)
 - Hotter/Colder functionality (this is an extra feature, if time) (4/20)
- Prince
 - finalize graph and chart formats for displaying health statistics (3/30)
 - Basic charting or graphing of health statistics (4/10)
 - Completion of 5 challenges (4/2)
 - Final completion of challenges (4/15)

Preliminary Results

- Android Application
 - Video demo



Preliminary Results

- Facebook Application
 - [Live demo](#)

Environmental, Social, Political and Ethical Concerns

- Privacy/Social Concerns
 - User data being stored, shared
 - Security when sending data to/from central database
 - PHP scripts that interact with Android are biggest issue
 - To ensure user privacy: user agreement on FB app
- Ethical/Legal Concerns
 - Ensure challenge destinations are accessible, legal
 - Ensure not infringing any policies or user rights
- Environmental Concerns
 - System does not have big environmental impact

Questions

